

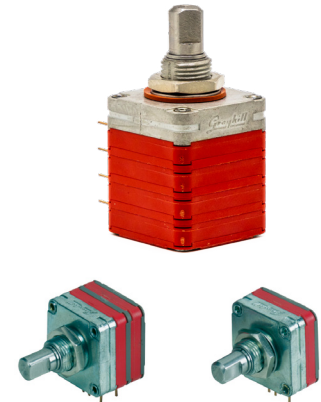


SERIES 25B

Multi-deck

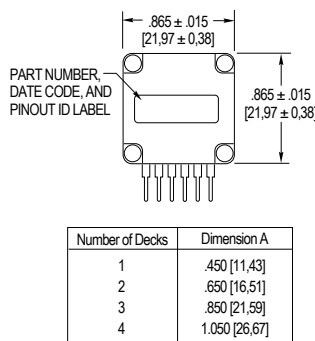
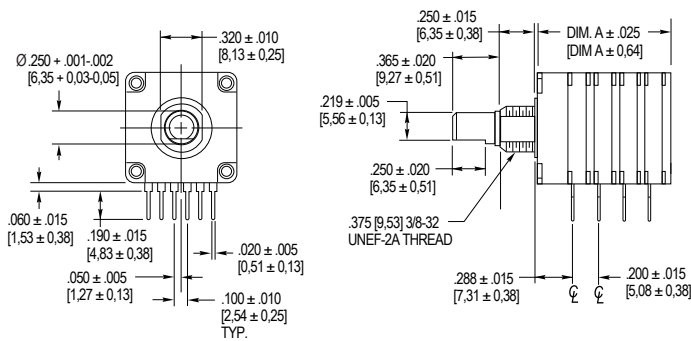
FEATURES

- Multiple code and indexing choices
- Reliability tested to listed specifications
- Less than 1.0" square
- Termination choices
- Panel and shaft seal option
- Manufactured to ISO 9001 and military standards
- Custom configurations available

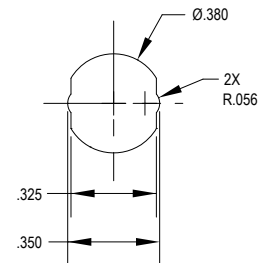


DIMENSIONS in inches [and millimeters]

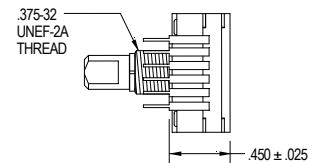
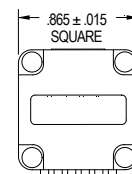
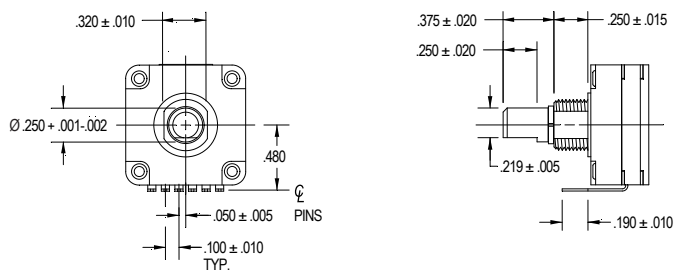
BP Style: Terminals Perpendicular to Shaft



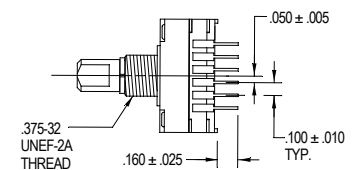
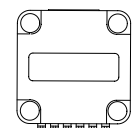
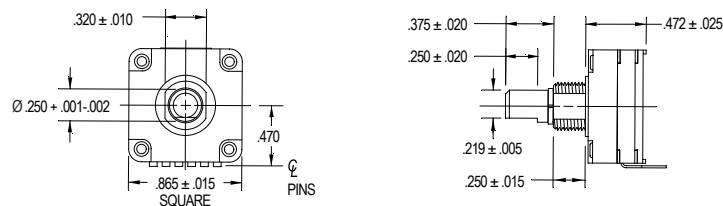
Recommended Panel Cutout



BF Style: Front-Facing Terminals (Single Deck Only)



BR Style: Rear-Facing Terminals (Single Deck Only)



SPECIFICATIONS

Electrical Ratings

Switching Loads	150 mA at 120 Vac, resistive; 150 mA at 28 Vdc, resistive
Current Carrying Capacity	250 mA at 28 Vdc, resistive
Contact Resistance	75 mΩ maximum after life
Insulation Resistance	1000 mΩ minimum between terminals and shaft
Voltage Breakdown	1000 Vac minimum between terminals and shaft
Life Expectancy	50,000 cycles at rated loads
Contacts	Shorting

Mechanical Ratings

Stop Strength	10 in-lbs minimum
Rotational Torque	4-20 in-oz, dependent on the number of decks
Operating Temperature Range	-65 °C to +85 °C
Non-Turn Device	Flatted mounting bushing, .375" diameter x .320"
Package Size	.865" square
Termination	PC terminals, .100" on center. Decks are .200" apart
Hardware	Hex nut and lockwasher supplied

Materials and Finishes

Bushing	Die cast zinc alloy, nickel plated
Mounting Hardware	Plated brass
Decks, Deck Separators, End Plate	Thermoplastic
Contacts and Terminals	Gold, silver, nickel-plated beryllium copper
Shaft, Stop Blades	Stainless steel
Detent Balls	Steel, nickel plated
Rivets	Brass, zinc plated

ORDERING INFORMATION

Control knobs available. Specials include 1/8" diameter shaft, custom angles of throw for binary, binary complement and gray code outputs.

For prices and discounts, contact a local Sales Office, an authorized local Distributor or Grayhill.

